

## JAK2(R683G)

**Catalog Number:** 26314

**Gene Symbol:** JAK2, JTK10, THCYT3

**Description:** Anti-JAK2(R683G) Mouse Monoclonal Antibody

**Background:** JAK2 is a non-receptor tyrosine kinase. It is a member of the Janus kinase family and has been implicated in signaling by members of the type II cytokine receptor family, the GM-CSF receptor family, the gp130 receptor family, and the single chain receptors. JAK2 orthologs have been identified in all mammals for which complete genome data are available. Mutations of JAK2 have been implicated in polycythemia vera, essential thrombocythemia, and myelofibrosis as well as other myeloproliferative disorders.

**Immunogen:** A synthetic peptide from the internal region of JAK2 which includes the mutation of R683G, human origin.

**Tested Applications:** ELISA, WB, IF, IHC

**Recommended Dilutions:**

ELISA:	1:1000-1:2000
WB:	1:500-1:1000
IF:	1:50-1:100
IHC:	1:50-1:100

**Concentration:** 0.5 mg/ml

**Host:** Mouse

**Clonality:** Monoclonal

**Isotype:** IgG

**Purity:** Purified from ascites

**Format:** Liquid

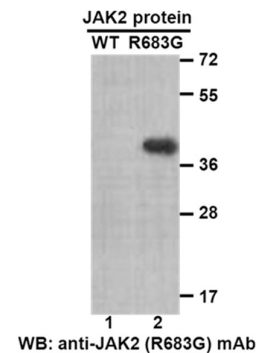
**Preservative:** No

**Constituents:** PBS (without Mg<sup>2+</sup> and Ca<sup>2+</sup>), pH7.4, 150 mM NaCl, 50% glycerol

**Species Reactivity:** Recognizes JAK2(R683G), but not wild type JAK2 protein from vertebrates.

**Storage Conditions:** Store at -20°C. Avoid freeze / thaw cycles.

### Western blot:



### Western blot analysis of recombinant JAK2 (R683G) and wild type proteins.

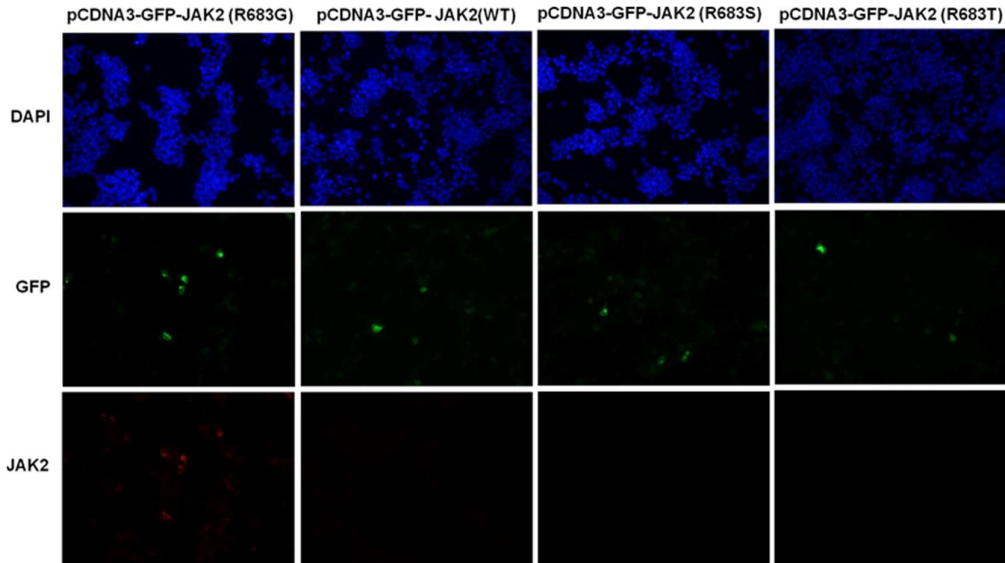
Purified His-tagged JAK2 (R683G) protein (lane2) and corresponding wild type protein (lane1) were blotted with anti-JAK2 (R683G) monoclonal antibody (Cat. # 26314).

FOR RESEARCH USE ONLY. NOT FOR DIAGNOSTIC APPLICATIONS

A helping hand for your research

---

## Immunofluorescence:



### Immunofluorescence of cells expressing JAK2 proteins with anti-JAK2 (R683G) antibody.

HEK293T cells were transfected with pCDNA3-GFP-JAK2 (R683G) plasmid, pCDNA3-GFP-JAK2 (WT) plasmid, pCDNA3-GFP-JAK2 (R683S) plasmid or pCDNA3-GFP-JAK2 (R683T) plasmid, then fixed and stained with anti-JAK2 (R683G) monoclonal antibody (Cat. # 26314).

---

FOR RESEARCH USE ONLY. NOT FOR DIAGNOSTIC APPLICATIONS